

1A Old Haymarket 73-89 Victoria Street, Liverpool, L1 6AF
Tel: 0151 305 2577
Email: liverpoolsales@ascendproperties.com
www.ascendproperties.com

Ascend

Built on higher standards



20 Water Street, Liverpool

£900 PCM

VIDEO TOUR AVAILABLE

If you're looking for style and luxury in the heart of Liverpool city centre, then look no further. This stunning development has a first floor 2-bedroom apartment up for grabs and would be spot-on for working professionals looking for the height of modern city living.

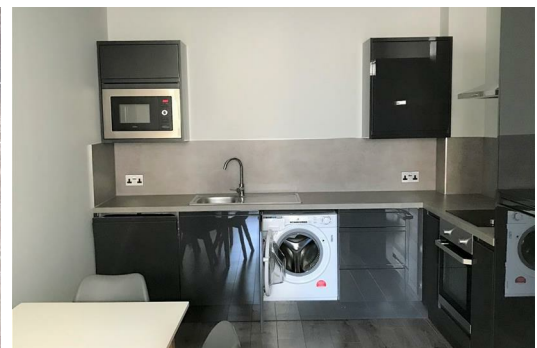
Situated in one of the most desirable districts in Liverpool, this apartment also provides spacious living combined with a luxury interior. Inside you'll find a stylish open-plan living room/kitchen, with a neutral design complete with polished oak flooring. The porthole-style windows gives the apartment a truly unique feel. The kitchen benefits from handmade units finished in high-gloss, along with fully-integrated appliances, ceramic hobs and a stainless steel extractor.

The bedrooms provide a haven away from the bustle of the city, with soft carpets and ample space. The fully-fitted bathroom suites will benefit from a white design and chrome taps.

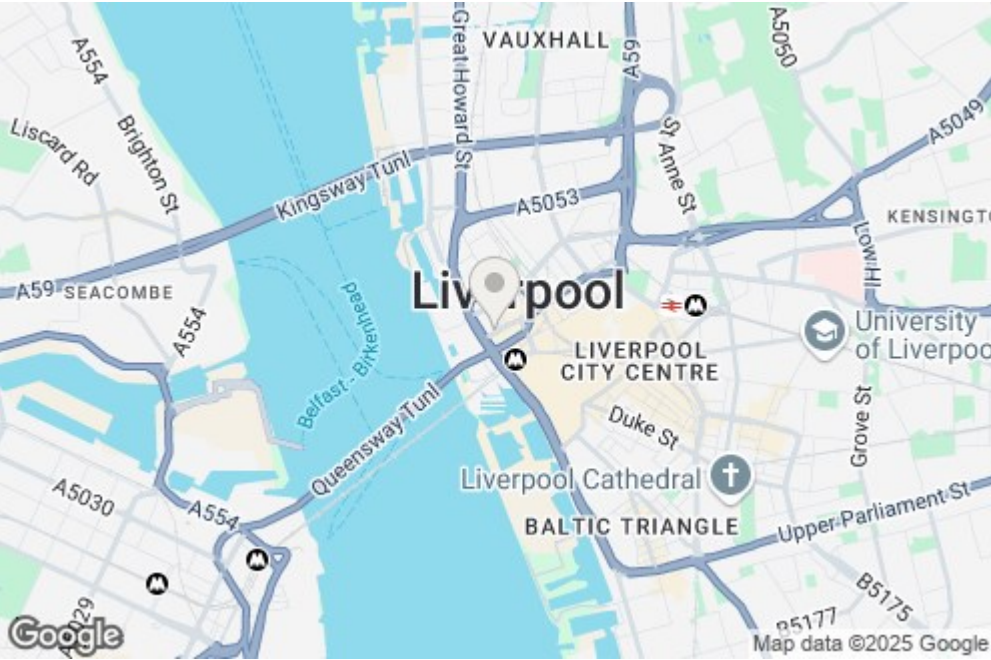
Here you'll be perfectly placed for both work and play. Both Moorfields and Liverpool James Street train stations are just a 5 minutes away, along with several bus stops right on your doorstep. Liverpool One is just a 5 minute walk away, offering a huge variety of shops, bars, cafes and restaurants.

Images used for Marketing Purposes

- Deposit: £1,030
- Tenancy Length: 12 Months Minimum



608 Reliance House 20 Water Street, Liverpool, Merseyside, L2 8AA



Energy Efficiency Rating		Environmental Impact (CO ₂) Rating	
Very energy efficient - lower running costs	Score	Very environmentally friendly - lower CO ₂ emissions	Score
A (92-100)	83	A (20-23)	88
B (81-91)	83	B (24-27)	88
C (69-80)		C (28-31)	
D (55-68)		D (32-35)	
E (44-54)		E (36-39)	
F (35-43)		F (40-43)	
G (21-34)		G (44-47)	
Very energy efficient - higher running costs		Very environmentally friendly - higher CO ₂ emissions	